



WALL:
MINIMAL IVORY 29.5X88.8 CM RET. NATURAL P8055R
MINIMAL GREIGE 29.5X88.8 CM RET. P8057R

SHOWER:
MOSAIC MINIMAL MIX 29.5X29.5 CM NATURAL DC959



MINIMAL

High performance with a minimalist and clean look.

Elevada performance aliada a um visual suave e minimalista.
Haute performance associée à une visuel douce et minimaliste.
Hohe Leistung mit einem minimalistischen und sauberen look.

Elevadas prestaciones en un visual suave y minimalista.
Высокое качество в минималистическом исполнении и свежем дизайне.



WALL:
MINIMAL GREY 29.5X59.2 CM RET. NATURAL P3056R

**FULL
BODY****WALL / PORCELAIN TILES**

Revestimento / Porcelanato . Revêtements / Grès Cérame
 Wandfliesen / Feinsteinzeug . Revestimiento / Porcelánico
 Настенная Плитка / Керамогранит

30x90x0.45cm / 11.8"x35.4"

30x60x0.45cm / 11.8"x23.6"

**IVORY****GREY****GREIGE****CARBON**

HIGH PERFORMANCE AND DURABILITY

Alta performance e durabilidade . Haute performance et durabilité
 Hohe Leistung und Haltbarkeit . Alto desempeño y durabilidad
 Высокое качество и долговечность

**HIGH ABRASION RESISTANCE**

Alta resistência à abrasão . Haute résistance à l'abrasion
 Hohe Abriebfestigkeit . Alta resistencia a la abrasión
 Высокая устойчивость к истиранию

**HIGH STAIN AND CHEMICAL RESISTANCE**

Alta resistência às manchas . Haute résistance aux taches
 Hohe Fleckenbeständigkeit . Alta resistencia a las manchas
 Высокая устойчивость к загрязнению

**HIGH BREAKING RESISTANCE**

Alta resistência à rotura . Haute résistance à la rupture
 Hohe Bruchfestigkeit . Alta resistencia a la rotura
 Высокая прочность

**FULL
BODY****UNGLAZED FULL BODY PORCELAIN**

Porcelanato extrudido não esmaltado toda massa . Grès Cérame plaine masse non vitrifiée
 Unglasiertes Feinsteinzeug . Porcelánico toda masa
 Неглазурованный полнотельный керамогранит

MINIMAL

30x90x0.45cm / 11.8"x35.4"
30x60x0.45cm / 11.8"x23.6"

IDEAL FOR RENOVATIONS

Ideal para renovações
Idéal pour les rénovations
Ideal für Renovierungen
Ideal para renovaciones
Идеально для обновления интерьера



Only 4.5 mm
Só 4.5 mm . Seulement 4.5 mm
Nur 4,5 mm . Sólo 4.5 mm . только 4.5 мм



Easy to cut
Facil de cortar . Facile à couper
Leicht zu schneiden . Fácil de cortar . легко пезать



MINIMAL IVORY 29.5X88.8 CM RET. NATURAL P8055R
MOSAIC MINIMAL MIX 29.5X29.5 CM NATURAL DC959



WALL
PORCELAIN TILES



FULL
BODY



T2- SLIGHT
VARIATION



NATURAL
(MATTE/SHINE)



0.45CM
29.5x88.8
29.5x59.2



R9
CLASS 1
NATURAL

MINIMAL

30x90x0.45cm / 11.8"x35.4"
30x60x0.45cm / 11.8"x23.6"



IVORY

29.5x88.8x0.45 cm ret.
29.5x59.2x0.45 cm ret.



P8055R | C29
P3055R | C26

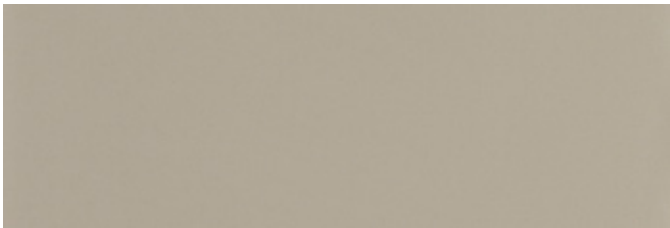


GREIGE

29.5x88.8x0.45 cm ret.
29.5x59.2x0.45 cm ret.



P8057R | C29
P3057R | C26

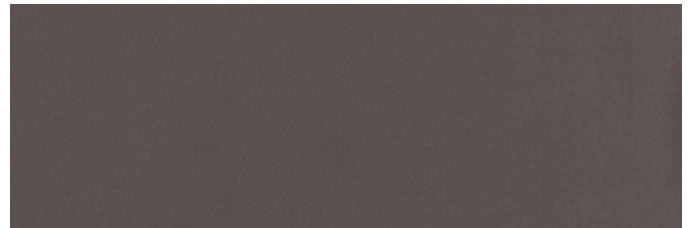


GREY

29.5x88.8x0.45 cm ret.
29.5x59.2x0.45 cm ret.



P8056R | C29
P3056R | C26

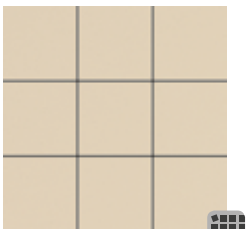


CARBON

29.5x88.8x0.45 cm ret.
29.5x59.2x0.45 cm ret.



P8058R | C29
P3058R | C26



MOSAIC MINIMAL IVORY

(9.7X9.7 CM) (PIECE)

29.5x29.5x0.45 cm DC960 | D16



MOSAIC MINIMAL GREIGE

(9.7X9.7 CM) (PIECE)

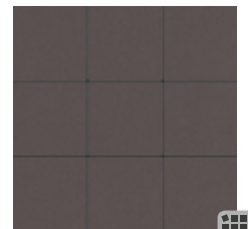
29.5x29.5x0.45 cm DC962 | D16



MOSAIC MINIMAL GREY

(9.7X9.7 CM) (PIECE)

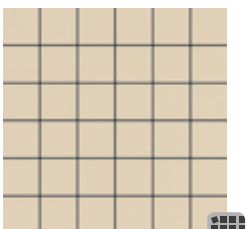
29.5x29.5x0.45 cm DC961 | D16



MOSAIC MINIMAL CARBON

(9.7X9.7 CM) (PIECE)

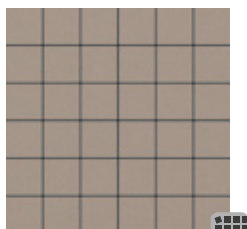
29.5x29.5x0.45 cm DC963 | D16



MOSAIC MINIMAL IVORY

(4.7X4.7 CM) (PIECE)

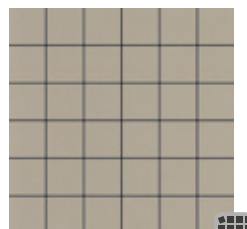
29.5x29.5x0.45 cm DC955 | D20



MOSAIC MINIMAL GREIGE

(4.7X4.7 CM) (PIECE)

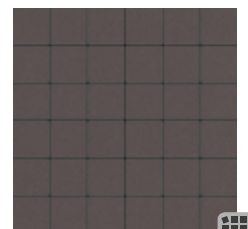
29.5x29.5x0.45 cm DC957 | D20



MOSAIC MINIMAL GREY

(4.7X4.7 CM) (PIECE)

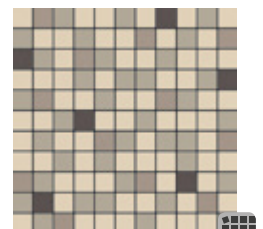
29.5x29.5x0.45 cm DC956 | D20



MOSAIC MINIMAL CARBON

(4.7X4.7 CM) (PIECE)

29.5x29.5x0.45 cm DC958 | D20



MOSAIC MINIMAL MIX

(2.5X2.5 CM) (PIECE)

29.5x29.5x0.45 cm DC959^(A) | D27

SIZES (CM)	PIECES / BOX	SQM / BOX	WEIGHT / BOX	BOX / PALLET	SQM / PALLET	WEIGHT / PALLET
Dimensão . Format Maße . Formato Размеры	Peças / Caixa . Pièces / Boite Stück / Karton . Piezas / Caja Штук / Коробка	M ² / Caixa . M ² / Boite M ² / Karton . M ² / Caja Кв.м / Коробка	Peso / Caixa . Poids / Boite Gewicht / Karton . Peso / Caja Вес / Коробка	Caixa / Paleta . Boite / Palette Kartons / Palette . Caja / Pallet Коробок / Поддон	M ² / Paleta . M ² / Palette M ² / Palette . M ² / Pallet Кв.м / Поддон	Peso / Paleta . Poids / Palette Gewicht / Palette . Peso / Pallet Вес / Поддон
29.5x88.8x0.45 ret.	8	2.090	22.36	25	52.250	559
29.5x59.2x0.45 ret.	14	2.440	24.64	40	97.600	986